

BioPince™

FULL CORE
BIOPSY SYSTEM

The Gold Standard
in Full Core Technology



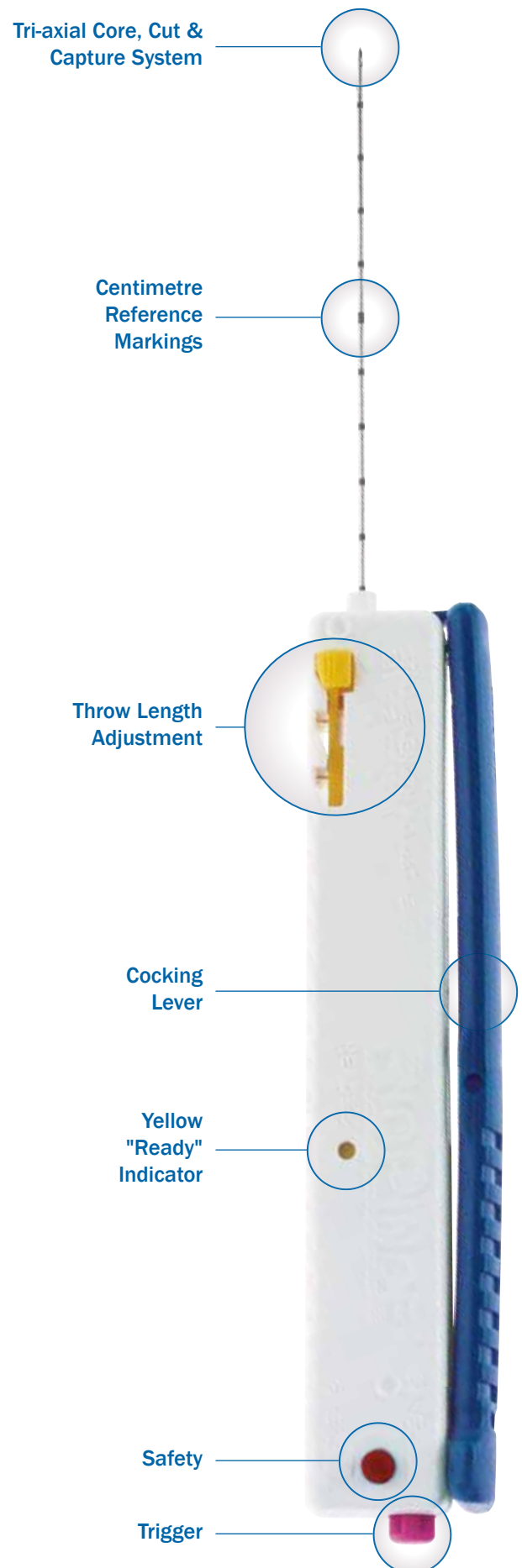
BioPince™

FULL CORE
BIOPSY SYSTEM

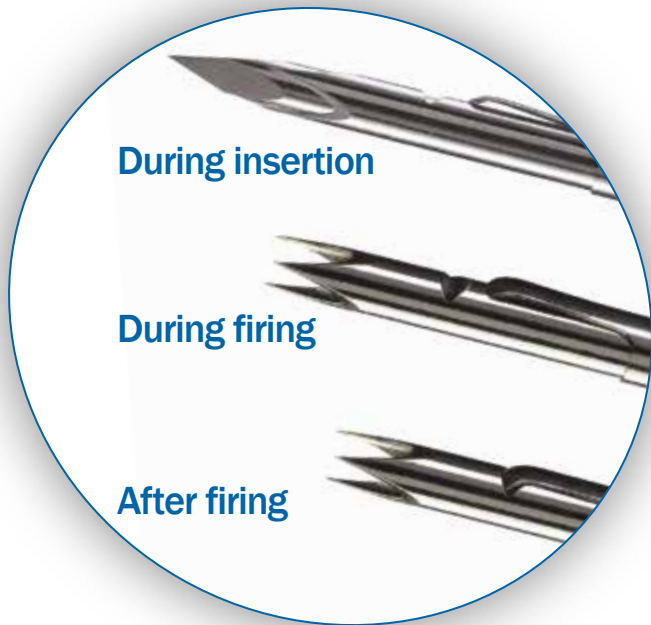
BioPince™ Full Core Biopsy Instrument utilizes our tri-axial core, cut and capture cannula system to harvest diagnostic quality specimens while reducing the risk of crush artifact and tissue fragmentation. A full cylindrical specimen is harvested for clinical diagnosis.

Features and Benefits

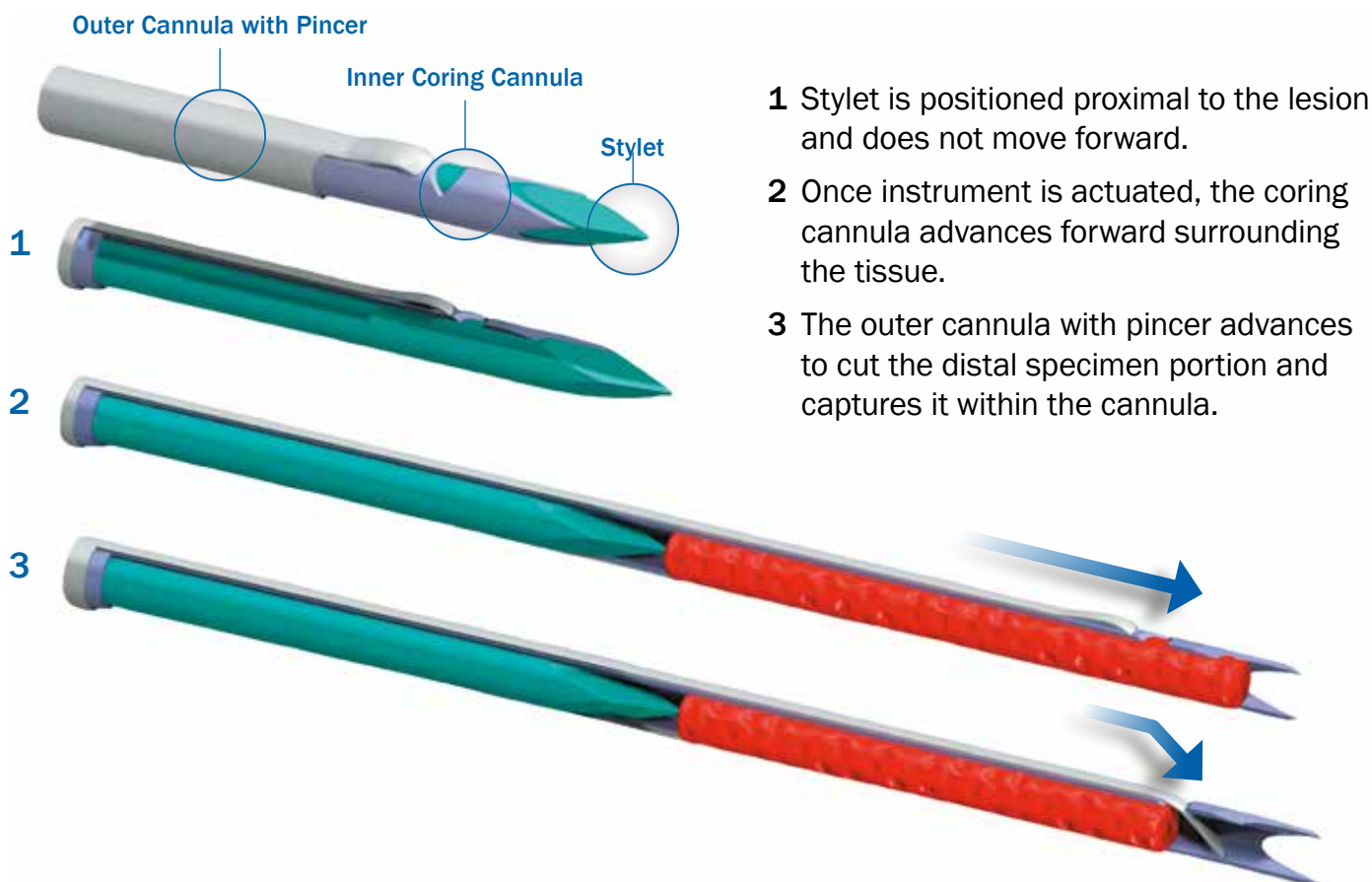
- Easy specimen retrieval expels sample when device is re-cocked. Device is now ready to take another sample.
- Variable throw length allows for clinical flexibility at the biopsy site. 13 mm yields 9 mm specimen length, 23 mm yields 19 mm specimen length, or 33 mm yields 29 mm specimen length.
- Ready indicator indicates that the device is cocked and ready to fire.
- Safety button allows locking the device to prevent misfiring.
- Centimeter markings provide reference for accurate depth placement.
- BioPince™ co-axial introducer needles allow for single-stick, multiple pass biopsies. (Sold separately)



BioPince™ Tri-axial Core, Cut & Capture System



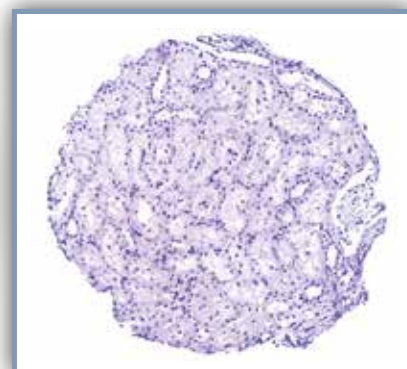
BioPince™ Needle Sequence



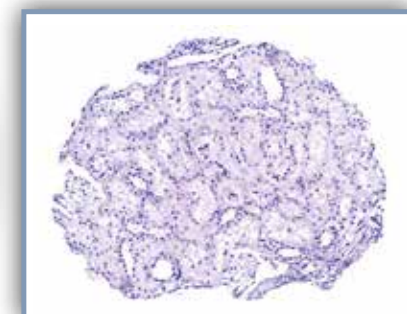
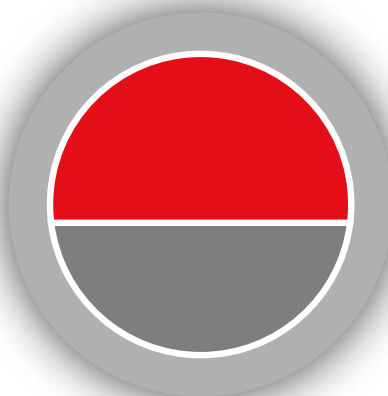
**Full core samples
result in up to 59%
more tissue volume**



BioPince™ Full Core Biopsy Instrument



Conventional Side-Notch Biopsy Instrument



Resources

Clinical Articles

"Better glomerular yield with a 16 gauge BioPince™ instrument compared to a 14 gauge tru-cut needle with taking fewer cores and fewer major complications."

Constatin, A.M., Brisson, M.L., Kwan, J., and Proulz, F. Percutaneous US-Guided Renal Biopsy: A Retrospective Study Comparing the 16 Gauge End-Cut and 14 Gauge Side-Notch Needles. *J Vasc Interv Radiol.* 2010; 21:357-361.

"Single-pass percutaneous US-guided liver biopsy with the INRAD 18g Express (now BioPince™) core needle biopsy system is a safe procedure that provides definitive pathologic diagnosis regularly."

Rivera-Sanfeliz, G., Kinney, T.B., Rose, S.C., Agha, A.K., Valji, K., Miller, F.J., and Roberts, A.C. Single-Pass Percutaneous Liver Biopsy for Diffuse Liver Disease Using an Automated Device: Experience in 154 Procedures. *J Cardiovasc Interv Radiol.* 2005; 28:584-588.

"Percutaneous image-guided biopsy using the described full-core, end-cut needle resulted in a specific diagnosis in 99/100 consecutive biopsies in various organs with a low complication rate."

Diederich, S., Padge, B., Vossas, U., Hake, R., and Eidt, S. Application of a Single Needle Type for All Image-Guided Biopsies: Results of 100 Consecutive Core Biopsies in Various Organs Using a Novel Tri-Axial, End-Cut Needle. *Cancer Imaging.* 2006; 6:43-50.

BioPince™

FULL CORE
BIOPSY SYSTEM



BIOPINCE™ PRODUCT INFORMATION

Full Core Biopsy (Box of 5)

Catalogue No.	Description
370-1080-01	16G x 10 cm, optional co-axial needle MCXS1610BP
370-1580-01	16G x 15 cm, optional co-axial needle MCXS1615BP
360-1080-01	18G x 10 cm, optional co-axial needle MCXS1810BP
360-1580-01	18G x 15 cm, optional co-axial needle MCXS1815BP
360-2080-01	18G x 20 cm, optional co-axial needle MCXS1820BP

CO-AXIAL INTRODUCER NEEDLES PRODUCT INFORMATION

Optional Co-axial Introducer Needles (sold separately) (Box of 5)

Catalogue No.	Description
MCXS1610BP	15G x 6.8 cm, co-axial to 370-1080-01
MCXS1615BP	15G x 11.8 cm, co-axial to 370-1580-01
MCXS1810BP	17G x 6.8 cm, co-axial to 360-1080-01
MCXS1815BP	17G x 11.8 cm, co-axial to 360-1580-01
MCXS1820BP	17G x 16.8 cm, co-axial to 360-2080-01



EMEA Customer Service

Argon Medical Devices Sarl
Espace Performance
Alphasis Bâtiment J
35760 St Gregoire
France
Tel: +33 (0) 2 99 68 94 95
Fax: +33 (0) 2 99 23 87 21
info-europe@argonmedical.com

Direct Sales Nordics

Argon Medical Devices
Danmark A/S
Knud Bro Alle 4
DK-3660 Stenløse
Denmark
Tel: +45 47 10 10 48
Fax: +45 70 40 45 10
customer@argonmedical.com

Argon Medical Devices
Danmark A/S
Arenavägen 41 plan 12
SE-121 77 Stockholm
Sweden
Tel: +46 8 50 56 88 70
Fax: +46 8 50 56 88 69
customer@argonmedical.com

Direct Sales France

Argon Medical Devices Sarl
Espace Performance
Alphasis Bâtiment J
35760 St Gregoire
France
Tel: +33 (0) 2 99 68 99 24
Fax: +33 (0) 2 99 23 87 21
service-france@argonmedical.com



© 2016 Argon Medical Devices Inc. All Rights Reserved.

No reproduction of any portion of this work shall be made without prior permission of the author.

BioPince™ is a trademark of Medical Device Technologies, Inc. and Argon Medical Devices, Inc. 96-6300-23/0713A